



YZ-S6 Floor Sweeper

instruction manual

安徽扬子工业科技有限公司
ANHUI YANGZI INDUSTRIAL TECHNOLOGY CO., LTD.



Operating instructions for sweeper

1. The sweeper needs to be installed and maintained by professionals. Users are not allowed to install and repair or disassemble or modify the components of the sweeper without authorization
2. Do not stack inflammable and explosive materials near the sweeper, or there will be fire danger
3. In thunderstorm weather, please turn off the power switch of the sweeper, otherwise the sweeper may be damaged by lightning
4. In case of any abnormal situation of the sweeper, such as abnormal noise, smell, smoke, rapid temperature rise and leakage, please immediately cut off the power switch, and then inform our customer service center

Thank you very much for choosing our products. Before putting the sweeper into use, please read the manual carefully and strictly follow it to achieve the best cleaning effect and prolong the service life of the machine. If you have any comments and suggestions, please contact us.

We warmly and quickly serve you.

technical parameters

SERIAL NTMBER	PROJECT	COMPANY	PARAMETER
1	Sweeping width	mm	1450
2	Side brush width	mm	2*260
3	Width of main brush	mm	590
4	Walking motor	w	1200
5	Side brush motor	w	2*90
6	Roller brush motor	w	800
7	Battery capacity	v/ah	48/80
8	Garbage capacity	L	170
9	Walking speed	km/h	0-10
10	working hours	h	3-4
11	work efficiency	m ² /h	9600
12	Total weight	kg	580
13	Product size	mm	1600*1450*1450

Performance characteristics

Overview of sweeper:

1. Adopt advanced high performance maintenance free battery, no side leakage, no harmful gas
2. Led front lighting, suitable for night work.
3. Large dust filter screen, can completely clean dust, automatic cleaning filter screen
4. Steel chassis, strong bearing capacity, durable tire, with hydraulic disc brake device.

Operating instructions for sweeper:

1. This machine is only used as a cleaning tool. If it is used for other purposes beyond the instructions in this guide, we will not be responsible for any damage caused.
2. The sweeper can clean the general garbage, and it is not suitable to clean the rope wire, poisonous and harmful and high temperature sundries, so as to avoid winding and burning the main part and side brush, so as to prevent it from working normally.
3. This machine can only be used by authorized and trained personnel.
4. When the machine stops working, it must be parked on the flat ground.
5. Irrelevant personnel and children should be removed from the scene when the machine is in use.
6. The power key switch must be turned off when opening the hood or machine maintenance and repair.
7. When transporting the sweeper, make sure it is firmly attached to the transport vehicle.
8. Make sure the battery is in a ventilated area when charging. Do not charge when the sweeper stops working or when it is running. When the power is lower than 20%, the battery should be charged in time, so as to prolong the battery life.
9. When the work is finished, the key should be pulled out in time to avoid the sweeper

adjustment and replacement of main brush and side brush

The main function of the side brush is to use its own rotation to collect the garbage from both sides to the middle, and collect the garbage from the main brush to the dustbin. The advantage of the side brush is that it can sweep out the garbage at the edges and dead corners, and improve the cleaning efficiency.

1. Adjustment of side brush

Under normal working conditions, the brush should be at the left position above the ground. If the brush is too low from the ground, it is easy to cause load heating overload and accelerate the wear of brush hair. Motor burned out, brush height adjustment method: adjust the panel side brush button



2. Replacement of side brush

Screw out the screw 1, remove the side brush, screw out the screw 2, and replace the side brush



The height of the main brush contacting the ground should be 2-4mm. When the main brush contacts the ground too low, the normal operation of the machine will be affected, and the parts are easy to heat up, thus reducing the service life of the machine.

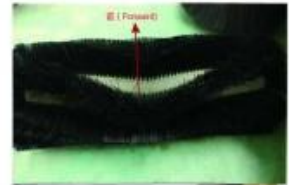
3. Adjustment of main brush

The height of the main brush contacting the ground can be determined by adjusting the limit screw.

replacement of main brush

Screw out the screws 1 to 4, remove the rocker arm and left baffle, and pull out the main brush.

When replacing, pay attention to the installation direction of the main brush, and do not reverse the direction.



filter cleaning and replacement

The waste filter element needs to be inspected regularly. When the filter is blocked and cannot be cleaned or damaged, it needs to be replaced.

Removal method of filter element

Screw off the screw on the filter base plate at the rear of the car and pull the filter out as a whole.

Note: in the replacement, you need

to apply grease to the oil seal, align it with the air outlet, and connect it slowly.



operation precautions

PROBLEM	REASON	TREATMENT
Large leaves or large garbage particles are leaked during sweeping	Working too fast	Reduce the working speed
	Brush height	Adjust brush height
	The bristles are deformed or entangled with filaments	Remove the entanglement
The sweeper leaves dust on the floor or dust from the side shields	Filter clogged	Clean the filter
	Skin damage	Check the baffle and replace it if damaged
Cleaning is not thorough, leaving paper scraps, leaves or other garbage	The lifting height of front bumper is not correct	Check the baffle and replace it if damaged
	The brush is pressed too low	Adjust brush height
The brush wears too fast	The bristles are entangled with filaments	Remove the entanglement
Too much noise at work	The bearing is broken	Replace the bearing
	Brush overpressure	Reduce brush pressure
The brush does not rotate when it works	The drive belt is damaged	Replace the belt
Brush and fan motor do not work	Motor damage	Replace the motor

electric dust shaker does not work	Excessive motor load	Check and reduce the load
	The switch is broken	Replace the fuse
	The fuse is burnt out	Check and reduce the load
	Motor damage	Replace the motor
	Bearing wear	Replace the bearing
The electric dust shaker does not work	Problems of controller, fuse, drive motor, governor and brake switch	Check the input and output voltage, alarm signal, indicator light, fuse, drive motor and connecting circuit.
The car can't move forward or backward	Pedal governor damaged	Replace the governor
	Brake pedal position fault	Reset the brake pedal and check if it is in good condition
	Brake switch failure	Replace the brake switch
	Controller damage	Replace the brake switch
The battery doesn't charge	Charger does not work	Check the charger input power
	The battery is burnt out	Replace the battery
	Charger	Check whether there is output of charger
	Loose battery terminals	Check and tighten the battery terminals
Battery discharging too fast	Insufficient charging time	Increase charging time
	The battery is burnt out	Replace the battery
	Charger damaged	Replace charger



Inspection Certificate

Number: _____

Model		Motor		Accessories	
Power cable		Switch		Shell	
Suction		Control		Fuselage	
Function		Manual		Package	



Warranty Card

Number: _____

Name		Tell	
Mailing address			
Purchase time		Bill number	
Product number		Fuselage number	
Replacement parts		Date	
Fault description:			

Warranty conditions:

1. Within the date of purchase, the motor is guaranteed for one year (if it is more than 7 days from the date of purchase, no replacement, only warranty).
2. Before using the equipment, you must understand the instructions and safety instructions.
3. During the warranty period, the artificial damage of warranty accessories will not be guaranteed.
4. During the warranty period, users who do not follow the operation instructions or dismantle and repair by themselves will not be guaranteed. (if repair is needed, the cost of production will be charged)
5. The buyer shall take the invoice to the place designated by the seller for repair, or send the machine back to our company for repair. (return freight, insurance paid by yourself)