



YZ-S1 FLOOR SWEEPER

instruction manual

安徽扬子工业科技有限公司
ANHUI YANGZI INDUSTRIAL TECHNOLOGY CO., LTD.



Hand push type double brush head sweeper is a new generation of environmental sanitation and cleaning appliances.

This machine is exquisite in design and unique in technology. It doesn't need any mechanical and electrical power. It can be pushed and walked.

Garbage can be easily recycled to the dustbin. The front and rear brushes can be adjusted at any time according to the ground and garbage conditions. It can achieve the lowest reactive power loss and the best cleaning effect. The armrest adopts movable adjustable design, which can adapt to users of different height requirements, and can be folded upright storage, saving space, convenient storage and transportation. Container handling. It is convenient and tightly sealed, and can hold acid, alkali, salt, oil dirt and other corrosive garbage. The main parts are engineering plastic manufacturing, anti-corrosion, anti-aging, no deformation, rotating parts of the closed precision bearings, so that the whole machine transport Flexible and labor-saving. This machine is novel in shape, easy to use, green and environmental protection, energy-saving and efficient, cleaning efficiency. It is 4-6 times as much as the traditional manual broom, especially suitable for street, community, park, courtyard, school, workshop, etc. It is not suitable to use power driven cleaning equipment in warehouses and large-scale activity venues.

Yangzi yz-s1 hand push sweeper conforms to the national development policy of "energy saving and environmental protection" and conforms to the global trend. The historical trend of low-carbon economy makes the cumbersome cleaning work simple and time-saving.



Operating instructions

1. The operator should use the sweeper under the normal operation state, and should consider the surrounding environment when operating; be careful to touch To people or things, special attention should be paid to the safety of children.
2. Adjust the best height of the front and rear brushes to the ground according to the situation of cleaning the ground garbage. The brush is too high off the ground If the cleaning effect is not enough, the brush wear will be increased and the propulsion resistance will be increased. The adjustment handle of the armrest should be loose
It should be tightened properly, and do not twist too much to prevent bolt damage.
3. The maintenance of the sweeper should be done by personnel with professional knowledge, using the spare parts provided by the manufacturer. In order to ensure that the sweeper has no fault operation.

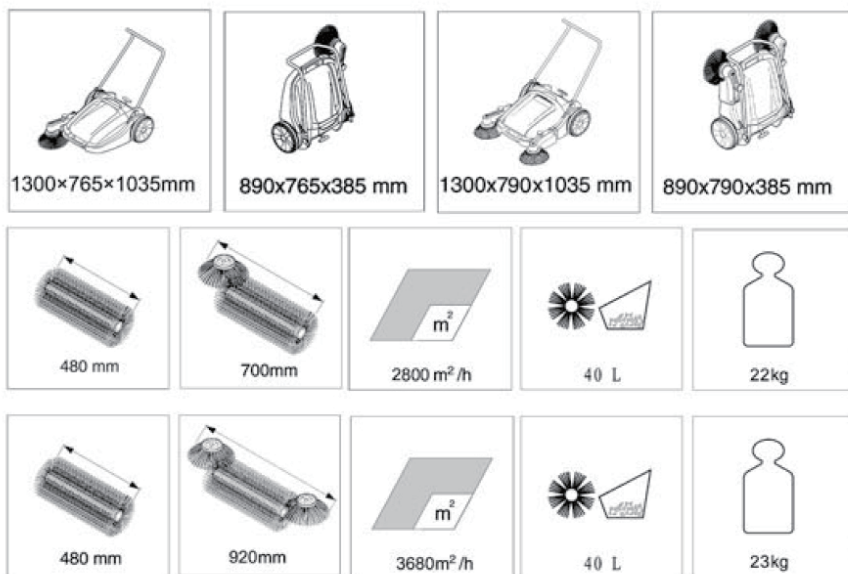
Product features

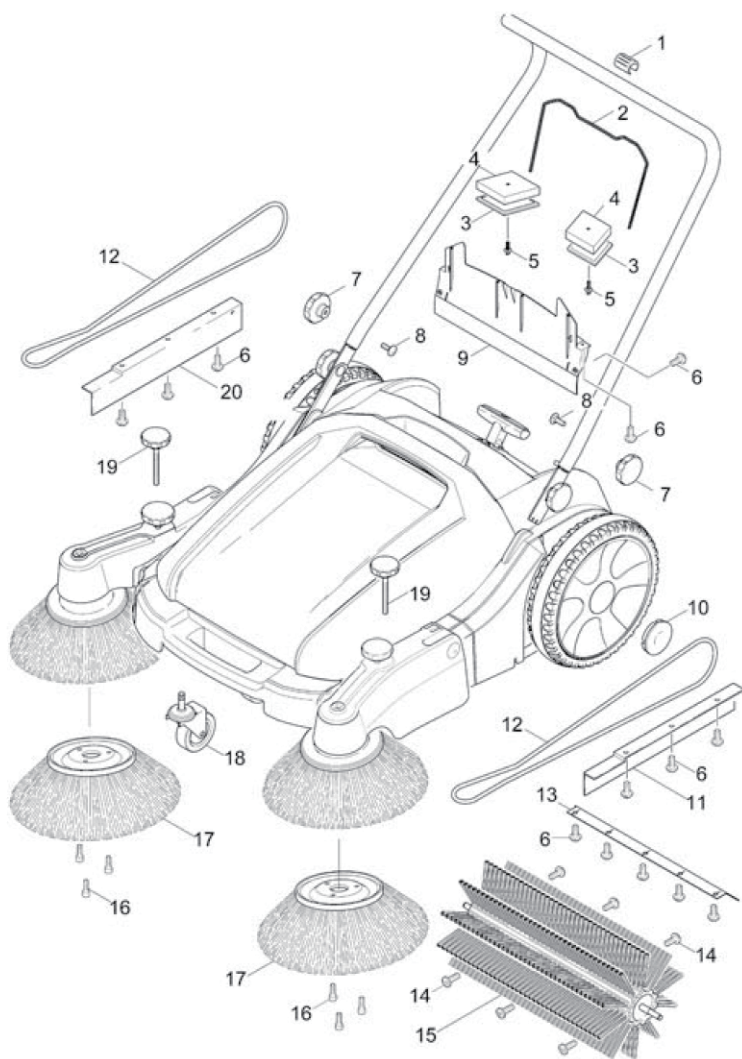
1. No energy needed--It is easy to recycle garbage to the dustbin without energy.
2. green environmental protection- to adapt to any silent, pollution-free places.
3. The efficiency of sweeping is 4-6 times of that of manual broom. Durable, the whole machine is made of engineering plastics Made, anti-corrosion, anti-aging, no deformation.
4. It is convenient to store and transport. One handle is convenient to carry. It can be stored upright to save space.

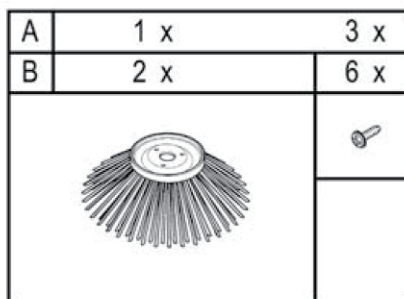
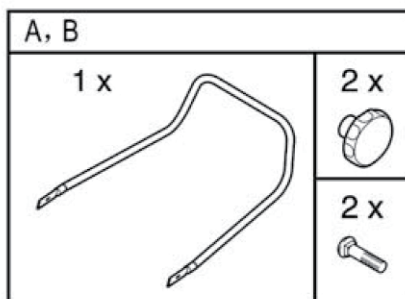
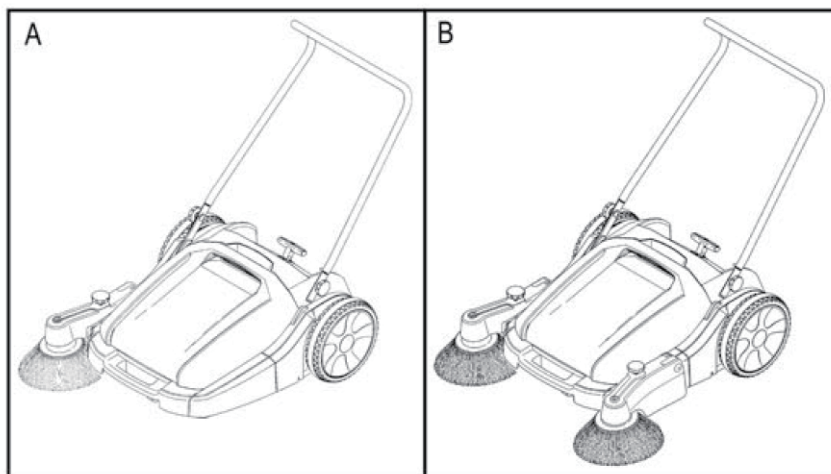
Operation precautions

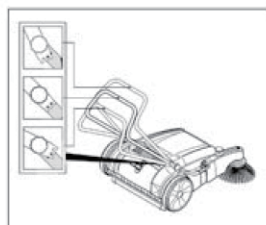
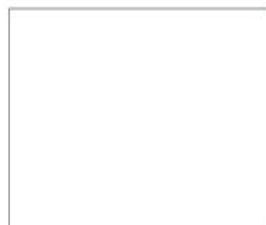
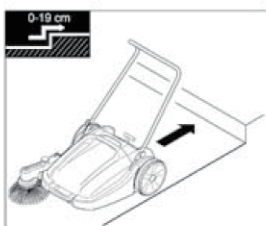
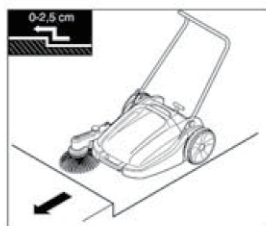
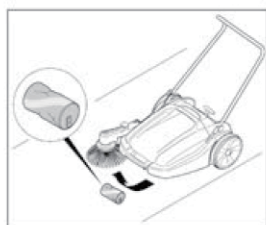
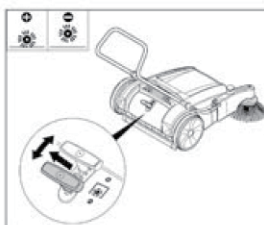
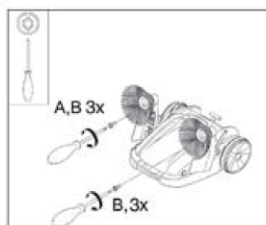
1. Before unpacking, please inform the seller of any shipping damage.
2. Before working, please read the operation instructions carefully and check whether the sweeper works normally.
3. The machine is not suitable for cleaning substances harmful to health. It is strictly forbidden to use this machine to clean burning or burning substances.
4. It is strictly forbidden to operate the machine with single wheel touching the ground to avoid damaging the performance of the whole machine.
5. Wear gloves when moving glass, metal or other parts in dustbin.

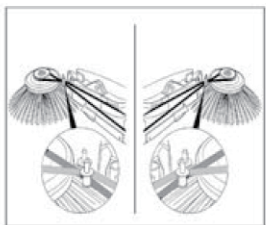
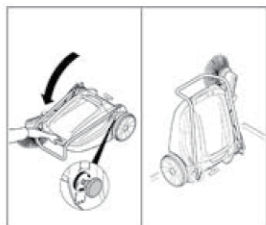
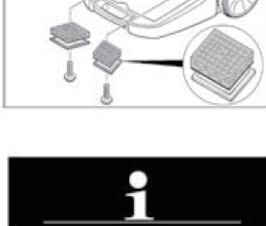
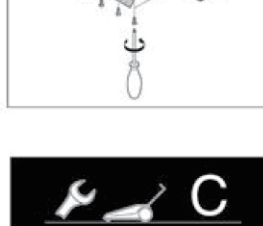
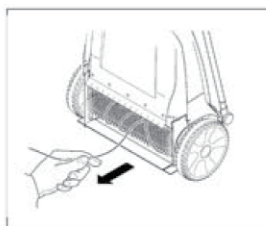
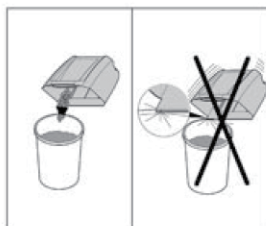
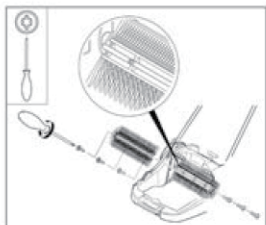
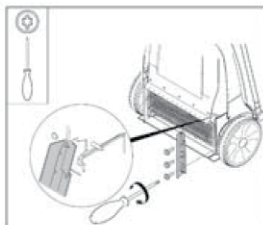
1. clamp
2. seal rubber
3. filter covering cap
4. filter
5. plug
6. screw ST4.8X16
7. turning knob
8. saucer-head screw
9. rear skirting
10. wheel cap
11. skirting 1
12. round belt
13. ground lip
14. screw ST 4.8X32
15. reversing rolling mill complete
16. screw ST 4.8X22
17. side broom
18. castor
19. turning knob
20. skirting 2











SERIAL NUMBER	ENTRY NAME	COMPANY	PARAMETER
1	Maximum sweeping width	mm	920
2	Maximum efficiency	m ² /h	3860
3	Walking motor	W	None
4	Roller brush motor	W	None
5	Battery capacity	V/AH	None
6	Side brush motor	W	None
7	Side brush width	mm	2*350mm
8	Maximum walking speed	Km/h	0-8
9	Bin volume	L	55
10	Net weight	kg	27.5
11	size	mm	890*810*1035

Common problems and Solutions

Problem	reason	Treatment
Large leaves or large garbage particles are leaked during sweeping	Working too fast	Reduce the working speed
	Brush height	Adjust brush height
	The bristles are deformed or entangled with filaments	Remove the entanglement
The sweeper leaves dust on the floor or dust from the side shields	Filter clogged	Clean the filter
	Skin damage	Check the baffle and replace it if damaged
Cleaning is not thorough, leaving paper scraps, leaves or other garbage	The lifting height of front bumper is not correct	Adjust the skin guard link
The brush wears too fast	The brush is pressed too low	Adjust brush height
Too much noise at work	The bristles are entangled with filaments	Remove the entanglement
	The bearing is broken	Replace the bearing
	Brush overpressure	Reduce brush pressure
The brush does not rotate when it works	The drive belt is damaged	Replace the belt
Brush and fan motor do not work	Motor damage	Replace the motor
The electric dust shaker does not work	Excessive motor load	Check and reduce the load
	The switch is broken	Replace the fuse
	The fuse is burnt out	Check and reduce the load
	Motor damage	Replace the motor
	Bearing wear	Replace the bearing
The brush can work normally and cannot run normally	Problems of controller, fuse, drive motor, governor and brake switch	Check the input and output voltage, alarm signal, indicator light, fuse, drive motor and connecting circuit.

The car can't move forward or backward	Pedal governor damaged	Replace the governor
	Brake pedal position fault	Reset the brake pedal and check if it is in good condition
	Brake switch failure	Replace the brake switch
	Controller damage	Replace the controller
The battery doesn't charge	Charger does not work	Check the charger input power
	The battery is burnt out	Replace the battery
	Charger	Check whether there is output of charger
	Loose battery terminals	Check and tighten the battery terminals
Battery discharging too fast	Insufficient charging time	Increase charging time
	The battery is burnt out	Replace the battery
	Charger damaged	Replace charger



Inspection Certificate

Number: _____

Model		Motor		Accessories	
Power cable		Switch		Shell	
Suction		Control		Fuselage	
Function		Manual		Package	



Warranty Card

Number: _____

Name		Tell	
Mailing address			
Purchase time		Bill number	
Product number		Fuselage number	
Replacement parts		Date	
Fault description:			

Warranty conditions:

1. Within the date of purchase, the motor is guaranteed for one year (if it is more than 7 days from the date of purchase, no replacement, only warranty).
2. Before using the equipment, you must understand the instructions and safety instructions.
3. During the warranty period, the artificial damage of warranty accessories will not be guaranteed.
4. During the warranty period, users who do not follow the operation instructions or dismantle and repair by themselves will not be guaranteed. (if repair is needed, the cost of production will be charged)
5. The buyer shall take the invoice to the place designated by the seller for repair, or send the machine back to our company for repair. (return freight, insurance paid by yourself)